

2012 – 2013 FACT BOOK

Office of Institutional Research



Fairfield
UNIVERSITY

Fairfield, Connecticut

PREFACE

The Fairfield University FACT BOOK is dedicated to serving the needs of administrators, faculty, and alumni for accurate, consistent, and reliable data on the characteristics of Fairfield University.

The online FACT BOOK is updated throughout the year and should be the user's preferred source of current data. The online edition is available at:

http://www.fairfield.edu/about/ir_factbook.html

The Office of Institutional Research is responsible for the production of the FACT BOOK. However, the University FACT BOOK would not be possible without the assistance from many colleagues across campus that provided us with information included within the following pages. A special thank you goes to those in Advancement, Alumni Relations, Career Planning Center, the DiMenna-Nyselius Library, Finance, Graduate Admission Office, Human Resources, Student Affairs, Undergraduate Admission, the University Registrar and Web Communications.

Amy C. Boczer
Interim Director, Office of Institutional Research
Canisius 302, Ext. 3434
aboczer@fairfield.edu

Corey Wrinn
Assistant Director & Coordinator of Enrollment Research and Data Analysis

Kathleen Nash
Operations Assistant, IR

Spring 2013

TABLE OF CONTENTS 2012 – 2013

<u>MISSION STATEMENT of FAIRFIELD UNIVERSITY</u>	3
<u>INSTITUTIONAL DIVERSITY</u>	4
<u>INSTITUTION</u>	
<u>The University Seal</u>	5
<u>The University Logo</u>	6
<u>Alma Mater</u>	7
<u>Jesuit Colleges and Universities in the United States</u>	8
<u>Accreditation</u>	9
<u>Institutional Memberships</u>	10
<u>Fairfield University Board of Trustees, 2012-13</u>	11
<u>University Presidents</u>	13
<u>University Administration</u>	14
<u>Fairfield University Organizational Chart</u>	15
<u>Honorary Degrees Awarded – Commencement</u>	16
<u>STUDENTS</u>	
<u>University Enrollment by School, 5 Year Trend</u>	17
<u>Fall Enrollment, Full-time/Part-time Head Count</u>	18
<u>Fall Enrollment, Full-Time Equivalent (FTE)</u>	19
<u>Undergraduate Enrollment Division, Fall 2012</u>	20
<u>Graduate Enrollment, Fall 2012</u>	21
<u>Majors of Students Enrolled in Full-Time Undergraduate Programs, Fall 2012</u>	22
<u>Full-Time Undergraduate Resident Status</u>	23
<u>Undergraduate Enrollment by Race/Ethnicity (2010 and on, new definitions)</u>	24
<u>First-Year Students by Race/Ethnicity and Pell Recipients</u>	25
<u>International Students, Fall 2012</u>	26
<u>First-Year Student Admission Trend</u>	27
<u>First-Year Student Profile, Class of 2016</u>	28
<u>First-Year Student Cohort SAT Quartiles</u>	29
<u>First-Year Student Geographic Distribution, Class of 2016</u>	30
<u>University Geographic Distribution, Fall 2012</u>	31
<u>Freshmen-to-Sophomore Retention, Original Cohort, AHANA, General Studies</u>	32
<u>Retention and Graduation Rates</u>	33
<u>Undergraduate Transfer Admission</u>	34
<u>Baccalaureate Degrees Awarded by Major</u>	35
<u>Master’s Degrees Awarded by Major</u>	36
<u>Degrees Awarded by School, Cumulative</u>	37
<u>Financial Aid Data</u>	38

FACULTY AND STAFF

University Faculty, Fall 2012	39
Full-Time Faculty by Program, Rank, and Gender, Fall 2012	40
Full-Time Faculty by Highest Degree, School and Tenure Status, Fall 2012	41
Full-Time Faculty Average Salary and Compensation by Rank and AAUP IIA Comparison 2011-12	42
University Personnel, Fall 2012	43

DIMENNA-NYSELIUS LIBRARY

Collection Holdings and Collection Circulation	44
Acquisitions Expenditures and Changes	45
Special Library Collections and Services	46

ALUMNI

University Alumni and Undergraduate Alumni by State	47
University Alumni by Country	48

ENDOWMENT AND DEVELOPMENT

University Endowment Market Value	49
Development	49

FACILITIES

University Buildings	50
--------------------------------------	----

HISTORY

53

FAIRFIELD UNIVERSITY MISSION STATEMENT

Fairfield University, founded by the Society of Jesus, is a coeducational institution of higher learning whose primary objectives are to develop the creative intellectual potential of its students and to foster in them ethical and religious values and a sense of social responsibility. Jesuit Education, which began in 1547, is committed today to the service of faith, of which the promotion of justice is an absolute requirement.

Fairfield is Catholic in both tradition and spirit. It celebrates the God-given dignity of every human person. As a Catholic university it welcomes those of all beliefs and traditions who share its concerns for scholarship, justice, truth and freedom, and it values the diversity which their membership brings to the university community.

Fairfield educates its students through a variety of scholarly and professional disciplines. All of its schools share a liberal and humanistic perspective and a commitment to excellence. Fairfield encourages a respect for all the disciplines – their similarities their differences, and their interrelationships. In particular, in its undergraduate schools it provides all students with a broadly based general education curriculum with a special emphasis on the traditional humanities as a complement to the more specialized preparation in disciplines and professions provided by the major programs. Fairfield is also committed to the needs of society for liberally educated professionals. It meets the needs of its students to assume positions in this society through its undergraduate and graduate professional schools and programs.

A Fairfield education is a liberal education, characterized by its breadth and depth. It offers opportunities for individual and common reflection, and it provides training in such essential human skills as analysis, synthesis, and communication. The liberally educated person is able to assimilate and organize facts, to evaluate knowledge, to identify issues, to use appropriate methods of reasoning and to convey conclusions persuasively in written and spoken work. Equally essential to liberal education is the development of the esthetic dimension of human nature, the power to imagine, to intuit, to create, and to appreciate. In its fullest sense liberal education initiates students at a mature level into their culture, its past, its present and its future.

Fairfield recognizes that learning is a life-long process and sees the education which it provides as the foundation upon which its students may continue to build within their chosen areas of scholarly study or professional development. It also seeks to foster in its students a continuing intellectual curiosity and a desire for self-education which will extend to the broad range of areas to which they have been introduced in their studies.

As a community of scholars, Fairfield gladly joins in the broader task of expanding human knowledge and deepening human understanding, and to this end it encourages and supports the scholarly research and artistic production of its faculty and students.

Fairfield has a further obligation to the wider community of which it is a part, to share with its neighbors its resources and its special expertise for the betterment of the community as a whole. Faculty and students are encouraged to participate in the larger community through services and academic activities. But most of all, Fairfield serves the wider community by educating its students to be socially aware and morally responsible persons.

Fairfield University values each of its students as an individual with unique abilities and potentials, and it respects the personal and academic freedom of all its members. At the same time it seeks to develop a greater sense of community within itself, a sense that all of its members belong to and are involved in the University, sharing common goals and a common commitment to truth and justice, and manifesting in their lives the common concern for others which is the obligation of all educated, mature human beings.

March 4, 1983

INSTITUTIONAL DIVERSITY

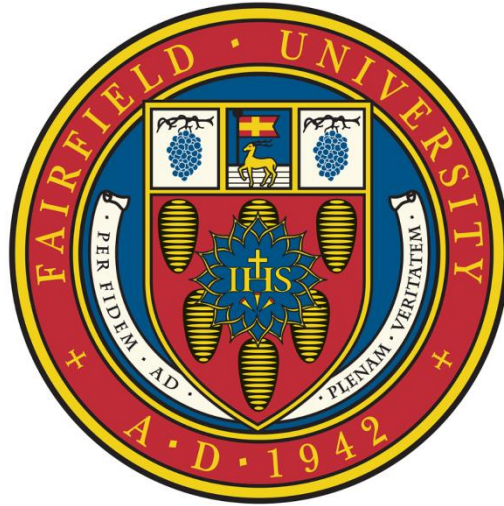
Diversity Vision Statement

As a Jesuit and Catholic institution, Fairfield University strives to be a diverse learning community of culturally conscious individuals. The University values and celebrates different perspectives within a commitment to the God-given dignity of the human person. As an expression of its dedication to the service of faith and the promotion of justice, the Fairfield community seeks to create an environment that fosters a deep understanding of cultural and human diversity. This diversity enriches its members, both as individuals and as a community, and witnesses to the truth of human solidarity.

Fairfield University is committed to promoting dialogue among differing points of view in order to realize an integral understanding of what it is to be human. The University recognizes that transcending the nation's political and social divisions is a matter of valuing diversity and learning respect and reverence for individuals, in their similarities and their differences. Fairfield will continue to integrate diversity in all facets of University life - academic, administrative, social, and spiritual - as together, the community seeks to realize a vision of the common good.

Embracing Diversity

Fairfield University defines diversity in the broadest sense, reflecting its commitment to human persons and service to all men and women. Diversity encompasses not only racial, ethnic, and religious diversity, but also diversity of socioeconomic contexts, cultural perspectives, national origins, sexual orientation, physical ability, and educational backgrounds.



FAIRFIELD UNIVERSITY SEAL

Fairfield's seal combines elements of its several traditions. The gold pine cones come from the coat of arms of the family of St. Robert Bellarmine, S.J. Superimposed on the cones is the badge of the Society of Jesus – the letters IHS surmounted by the cross and surrounded by the instruments of Christ's passion – to indicate that the University is in the care of members of the same religious family.

There are three compartments in the upper portion of the shield, because "the school is dedicated and exists in the Name of the Father and of the Son, and of the Holy Spirit." The central compartment portrays a hart crossing a ford, a part of the coat of arms of the Diocese of Hartford, whose boundaries encompassed the Town of Fairfield when the University was founded.

Finally, the two outer compartments show clusters of grapes, charges taken from the town seal and symbolic of the fertility of the verdant fields of the Town and County of Fairfield.

When the University was founded in 1942, the official name of the University was Fairfield University of St. Robert Bellarmine." Three of the original seals with this name still exist on campus - in the main lobby of Alumni Hall, on the exterior of the original Barone Campus Center, and on the glass front of Regis Hall facing the Quad.

The University seal will continue in use for official documents such as diplomas, commencement programs and transcripts.

Fairfield University's Motto "Per Fidem Ad Plenam Veritatem" translates to "Through faith to full Truth."



Fairfield UNIVERSITY

FAIRFIELD UNIVERSITY LOGO

The logo, unveiled in April, 1997, provides a visual identity to unify the University. The key features of the logo are the name in New Baskerville type, with “Fairfield” in upper and lower case letters and “UNIVERSITY” in all caps. The graphic of a shield features a stag fording a stream and a flowing white banner with a cross, both extracted from a section of the University seal. That selection of the seal was created in tribute to the Archdiocese of Hartford which assisted in the founding of the University since the stag or hart, another name for a male deer, is crossing a ford stream.

ALMA MATER

The University's alma mater opens with the words: "Fairfield! See the stag with the cross of gold rears once more its undefeated head. Fairfield, our field, as any field of old, bids our banners, like our blood, be red." According to James Hall's *Dictionary of Subjects of Symbols*, the long flowing white flag bearing a red cross is the Christian symbol of victory over death, the banner of Resurrection.

Fairfield! See the stag with cross of Gold
Rears once more its undefeated head.
Fair our field, as any field of old,
Bids our banners, like our blood, be red.

"Through faith, unto total truth," our cry
Swells from the sea to spire and sky;
Hear, Alma Mater, hear! Fairfield, hail!

Mem'ries fold away the thought of thee:
Autumn roses crimson on the bough,
Bright snow breaking to the dogwood tree
Keeps spring singing, then as now.

"Through faith, unto total truth," our cry
Swells from the sea to spire and sky;
Hear, Alma Mater, hear! Fairfield, hail!

Lyrics by Rev. John L. Bonn, S.J.

JESUIT COLLEGES AND UNIVERSITIES in the United States

Founded

1789	Georgetown University	Washington, D.C.
1818	Saint Louis University	St. Louis, Missouri
1830	Spring Hill College	Mobile, Alabama
1831	Xavier University	Cincinnati, Ohio
1841	Fordham University	New York, NY
1843	College of the Holy Cross	Worcester, Massachusetts
1851	Saint Joseph's University	Philadelphia, Pennsylvania
1851	Santa Clara University	Santa Clara, California
1852	Loyola College in Maryland	Baltimore, Maryland
1855	University of San Francisco	San Francisco, California
1863	Boston College	Boston, Massachusetts
1870	Canisius College	Buffalo, New York
1870	Loyola University of Chicago	Chicago, Illinois
1872	Saint Peter's College	Jersey City, New Jersey
1877	Regis University	Denver, Colorado
1877	University of Detroit Mercy	Detroit, Michigan
1878	Creighton University	Omaha, Nebraska
1881	Marquette University	Milwaukee, Wisconsin
1886	John Carroll University	Cleveland, Ohio
1887	Gonzaga University	Spokane, Washington
1891	Seattle University	Seattle, Washington
1910	Rockhurst College	Kansas City, Missouri
1911	Loyola Marymount University	Los Angeles, California
1912	Loyola University	New Orleans, Louisiana
1923	University of Scranton	Scranton, Pennsylvania
1942	Fairfield University	Fairfield, Connecticut
1946	Le Moyne College	Syracuse, New York
1954	Wheeling Jesuit College	Wheeling, West Virginia

ACCREDITATION

Fairfield University is fully accredited by the New England Association of Schools and Colleges, which accredits schools and colleges in the six New England states. Accreditation by one of the six regional accrediting associations in the United States indicates that the school or college has been carefully evaluated and found to meet standards agreed upon by qualified educators.

Additional accreditations include:

AACSB International - The Association to Advance Collegiate Schools of Business (Charles F. Dolan School of Business)

Accreditation Board for Engineering and Technology (School of Engineering)

Computer Engineering program

Electrical Engineering program

Mechanical Engineering program

Software Engineering program

American Chemical Society (College of Arts and Sciences)

B.S. in Chemistry

Commission on Accreditation of Marriage and Family Therapy Education of the American Association for Marriage and Family Therapy (Graduate School of Education and Allied Professions, GSEAP)

Marriage and Family Therapy program

Connecticut State Department of Higher Education (GSEAP)

Council for Accreditation of Counseling and Related Professions (GSEAP)

Counselor Education programs

Commission on Collegiate Nursing Education (School of Nursing)

Undergraduate Nursing programs

Graduate Nursing programs

International Association of Counseling Services

Counseling & Psychological Services Center

National Council for Accreditation of Teacher Education (GSEAP)

Academic program approvals include:

Connecticut State Department of Higher Education

Elementary and Secondary Teacher certification programs

Graduate programs leading to certification in specialized areas of education

School of Nursing programs

Connecticut State Board of Examiners for Nursing

Undergraduate Nursing programs

Council on Accreditation of Nurse Anesthesia Educational Programs

Certifications include:

National Collegiate Athletic Association

Supplemental First Responder, State of Connecticut (Department of Public Safety)

Infirmity License, State of Connecticut Department of Public Health

INSTITUTIONAL MEMBERSHIPS

The University is an institutional member of these organizations:

- AACSB International - The Association to Advance Collegiate Schools of Business
- America East Athletic Conference
- American Association for Employment in Education
- American Association of Colleges for Teacher Education
- American Association of Colleges of Nursing
- American Council for Higher Education
- American Council on Education
- American Society for Engineering Education
- APPA: Leadership in Educational Facilities
- Association for Information Communications Technology Professionals in Higher Education
- Association for Student Affairs at Catholic Colleges and Universities
- Association for the Advancement of Sustainability in Higher Education
- Association for University and College Counseling Center Directors
- Association of Catholic Colleges and Universities
- Association of College Unions International
- Association of Governing Boards
- Association of Higher Education Campus Television Administrators
- Association of International Education Administrators
- Association of Jesuit Colleges and Universities
- Catholic Campus Ministry Association
- Connecticut Association of Colleges and Universities for Teacher Education
- Connecticut Conference of Independent Colleges
- Connecticut Council for Higher Education
- Connecticut Distance Learning Consortium
- Connecticut Education Network
- Connecticut Library Consortium
- Council for Opportunity in Education
- Council of Connecticut Academic Library Directors
- Eastern Collegiate Athletic Conference
- EDUCAUSE
- EDUCAUSE Center for Applied Research
- EDUCAUSE Learning Initiative
- Fairfield Chamber of Commerce
- Greater Bridgeport Regional Business Council
- Higher Education Data Sharing Consortium
- International Association of Campus Law Enforcement Administrators
- Jesuit Association of Student Personnel Administrators
- Metro Atlantic Athletic Conference
- NASPA: Student Affairs Administrators in Higher Education
- National Action Council for Minorities in Engineering
- National Association for Campus Activities
- National Association of College and University Attorneys
- National Association of College and University Business Officers
- National Association of Colleges and Employers
- National Association of Collegiate Directors of Athletics
- National Association of Independent Colleges and Universities
- National Catholic Educational Association
- National Collegiate Athletic Association
- National Institute for Technology and Liberal Education
- National Intramural-Recreational Sports Association
- New England Business and Economic Association
- New England Library Information Network
- Northeast Regional Computer Program
- Online Computer Library Center
- Society for College and University Planning
- The College Board
- The Forum on Education Abroad

**FAIRFIELD UNIVERSITY BOARD OF TRUSTEES
2012-2013**

William L. Atwell P'08, Chair
Frank J. Carroll, III '89, Vice Chair

Nancy A. Altobello '80
Americas Vice Chair, People
Ernst & Young LLP

William L. Atwell, P'08
Managing Director
Atwell Partners LLC

Rev. John F. Baldovin, S.J.
*Professor of Historical and Liturgical
Theology*
Boston College School of Theology and
Ministry

Rev. Terrence A. Baum, S.J.
President
Rockhurst High School

Rev. Thomas G. Benz, S.J.
Assistant Director of Novices
Society of Jesus, MD, NY, NE Provinces

Joseph R. Bronson '70
CEO/Principal
The Bronson Group, LLC
Advisory Director
GCA Savvian Advisers, LLC

Frank J. Carroll, III '89
Managing Director
Oaktree Capital Management, LP

Kevin M. Conlisk '66, P'91
Principal and Chief Financial Officer
Alinabal Holdings Corp.

Timothy J. Conway '76
Chairman and Chief Executive Officer
NewStar Financial, Inc.

William C. Crager '86
President
Envestnet, Inc.

Sheila K. Davidson '83
*Executive Vice President, Chief Legal Officer &
General Counsel*
New York Life Insurance Co.

William P. Egan '67, P'99
Managing General Partner
Marion Equity Partners

Thomas A. Franko '69
*Managing Director and General Counsel,
Retired*
Pershing LLC

Peter J. Gillen '68
College Basketball Analyst for TV and Radio
CBS Sports Network

Patricia E. Glassford '85
Vice President and Chief Financial Officer
GE Corporate Treasury

Brian P. Hull '80, P'13
*Vice Chairman, Wealth Management
Americas;*
Head of Wealth Management Partnerships
UBS Financial Services, Inc.

Paul J. Huston '82
Partner
Hudson Ferry Capital

Jack L. Kelly '67, P'96
Managing Director, Retired
Goldman Sachs & Co.

**FAIRFIELD UNIVERSITY BOARD OF TRUSTEES
2012-2013 (continued)**

Susan Robinson King MA'73
*Dean and John Thomas Kerr Distinguished Professor,
School of Journalism and Mass Communication
University of North Carolina, Chapel Hill*

Katherine N. Lapp '78
*Executive Vice President
Harvard University*

William A. McIntosh P'92, '86

Andrew J. McMahon '89 P'13
*President
AXA Equitable*

John C. Meditz '70
*Managing Director, Co-Founder, Senior Portfolio
Manager
Horizon Kinetics, LLC*

Elnor L. Morrell '81, P'03
*IT Architecture Consultant
UnitedHealth Group, Inc.*

Most Rev. George V. Murry, S.J.
*Bishop
Diocese of Youngstown*

Gavin G. O'Connor '88
*Partner & COO, Investment Management Division
Goldman, Sachs & Company*

Biff J. O'Reilly '80, P'11
*President, Real Estate Development and
Management
PBS Capital*

Rev. Stephen A. Privett, S.J.
*President
University of San Francisco*

Christopher C. Quick '79
*Vice Chairman, Retired
Bank of America*

Rosellen W. Schnurr '74
Educator, Retired

Kelly A. Simon '01
KJ Investment

Rev. Jeffrey P. von Arx, S.J.
*President
Fairfield University*

Marianne Dolan Weber P'16
*Manager
Knickerbocker Group LLC*

James D. Wehr '79
*President & CEO
The Phoenix Companies*

Trustees Emeriti

E. Gerald Corrigan '63
Charles F. Dolan P'85, P'86

Aloysius P. Kelley, S.J.
Roger M. Lynch '63, P'95

UNIVERSITY PRESIDENTS

1. 1942 – 1944 Rev. John J. McElaney, S.J.
2. 1944 – 1951 Rev. James H. Dolan, S.J.
3. 1951 – 1958 Rev. Joseph D. FitzGerald, S.J.
4. 1958 – 1964 Rev. James E. FitzGerald, S.J.
5. 1964 – 1973 Rev. William C. McInnes, S.J.
6. 1973 – 1979 Rev. Thomas R. Fitzgerald, S.J.
7. 1979 – 2004 Rev. Aloysius P. Kelley, S.J.
President Emeritus
8. 2004 - Rev. Jeffrey P. von Arx, S.J.

UNIVERSITY ADMINISTRATION*

Jeffrey P. von Arx, S.J., Ph.D.

Charles H. Allen, S.J., M.A.

University President

Special Assistant to the President

Julie Dolan, M.B.A.

Beth Evers, M.B.A.

Michael Graham-Cornell, B.S.

Vice President for Finance and Treasurer

Assistant Vice President for Budget and Financial Analysis

Director of Computing and Network Services

Paul J. Fitzgerald, S.J., Ph.D.

Lynn Babington, Ph.D., M.N.

Jack W. Beal, Ph.D.

Elizabeth H. Boquet, Ph.D.

Robbin D. Crabtree, Ph.D.

Susan D. Franzosa, Ph.D.

Donald E. Gibson, Ph.D.

Mary Frances Malone, Ph.D.

Joan Overfield, M.A., MLIS

Senior Vice President for Academic Affairs

Dean, School of Nursing

Dean, School of Engineering

Associate Academic Vice President

Dean, College of Arts and Sciences

Dean, Graduate School of Education and Allied Professions

Dean, Dolan School of Business

Associate Academic Vice President

University Librarian and Director of Library Services

Stephanie B. Frost, M.A.

Janet A. Canepa, B.S.

Robert P. Cottle, B.S.

Vice President for University Advancement

Director of Alumni Relations

Assistant Vice President for Development

Thomas C. Pellegrino, Ph.D., J.D.

Susan Birge, Ed.D., M.S., LPC

George E. Collins, S.J.

Karen A. Donoghue, M.A.

Vice President for Student Affairs

Assistant Vice President and Director of Counseling and Psychological Services

Director of Campus Ministry

Dean of Students

Mark C. Reed, Ed.D., M.B.A.

Eugene P. Doris, M.A.T.

James D. Fitzpatrick, M.A.

David Frassinelli, M.S.

Mark Guglielmoni, M.S.

Todd Pelazza, B.S.

Karen Pellegrino, M.A.

Vice President for Administration and Chief of Staff

Director of Athletics

Assistant Vice President for Student Affairs

Associate Vice President for Facilities Management

Director of Human Resources

Director of Public Safety

Dean of Enrollment

Rama P. Sudhakar, M.A.

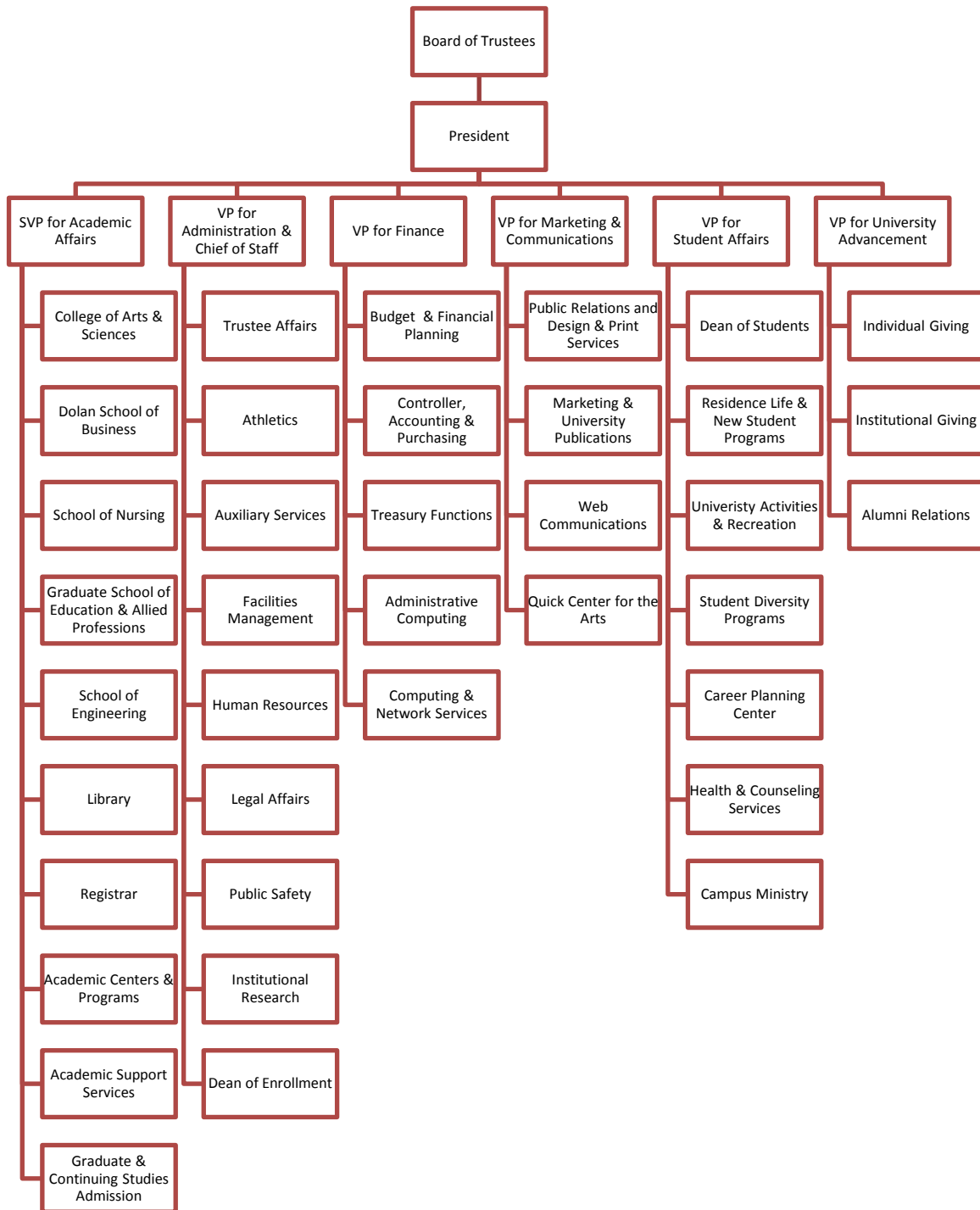
Martha F. Milcarek, B.S.

Vice President for Marketing and Communications

Assistant Vice President for Brand Management and Public Relations

* As of Fall 2012 Semester

FAIRFIELD UNIVERSITY ORGANIZATIONAL CHART 2012-2013



HONORARY DEGREES AWARDED - COMMENCEMENT 2006 to Present

2012: Commencement, May 20

Reverend Richard J. Clifford, S.J. – *Doctor of Humane Letters*
Jane Ellen Ferreira – *Doctor of Humane Letters*
Sister Claire Fitzgerald, S.S.N.D. – *Doctor of Humane Letters*
Joseph P. Russoniello – *Doctor of Laws*
Dr. Joseph G. Timpone, Jr. – *Doctor of Science*
Suzanne Wright – *Doctor of Laws*
Bob Wright – *Doctor of Laws*

2011: Commencement, May 22

Honorable Maryanne Trump Barry – *Doctor of Laws*
Russell L. Goings – *Doctor of Humane Letters*
Rear Admiral Brian P. Monahan – *Doctor of Science*
Reverend John W. O'Malley, S.J. – *Doctor of Humane Letters*
Joseph D. Sargent – *Doctor of Laws*

2010: Commencement, May 23

James L. Abbruzzese – *Doctor of Science*
Reverend Daniel J. Harrington, S.J. – *Doctor of Humane Letters*
Katherine Lapp – *Doctor of Laws*
Dr. Mayra Luz Perez Diaz – *Doctor of Laws*
Emily Kernan Rafferty – *Doctor of Laws*

2009: Commencement, May 17

Monsignor Ralph W. Beiting – *Doctor of Laws*
Dr. Mathy Mezey – *Doctor of Science*
Dr. Peter J. Pronovost – *Doctor of Science*
Bryan A. Stevenson – *Doctor of Laws*

2008: Commencement, May 18

David Amram – *Doctor of Humane Letters*
Reverend John Halligan, S.J. – *Doctor of Laws*
Sister M. Julianna Poole, S.S.N.D. – *Doctor of Laws*
Francis T. Vincent, Jr. – *Doctor of Laws*

2007: Commencement, May 20

Edward P. Hardiman – *Doctor of Laws*
Meghan Lowney – *Doctor of Laws*
James P. Roach – *Doctor of Laws*
Very Reverend Thomas J. Regan, S.J. – *Doctor of Laws*

2006: Commencement, May 21

Hope E. Carter – *Doctor of Laws*
Michael Joseph Daly – *Doctor of Laws*
Archbishop Celestino Migliore – *Doctor of Laws*
British August Robinson – *Doctor of Laws*

Refer to http://www.fairfield.edu/about/about_honorarydegrees.html for full listing

UNIVERSITY ENROLLMENT BY SCHOOL
Five Year Trend-Headcount

Full-time Undergraduate	2008	2009	2010	2011	2012
College of Arts & Sciences	1,843	1,781	1,801	1,812	1,866
Dolan School of Business	1,104	1,016	981	990	1,085
School of Nursing	278	303	331	331	318
School of Engineering	122	100	110	119	136
University College General Studies	36	25	55	39	N/A
Fairfield Off-Campus Abroad Programs*	79	82	89	82	46
Visiting International Students	7	13	21	12	20
Subtotal Full-time Undergraduate	3,469	3,320	3,388	3,385	3,471
Part-time Undergraduate					
University College	473	418	381	314	N/A#
College of Arts & Sciences	0	0	0	2	98#
School of Business	0	0	1	1	15
School of Nursing	83	87	88	73	76
School of Engineering	59	61	65	59	52
Continuing Studies	0	0	0	1	167#
Subtotal Part-time Undergraduate	615	566	535	450	143
TOTAL UNDERGRADUATE	4,084	3,886	3,923	3,835	3,614
Graduate Full-time and Part-time					
Graduate School of Education and Allied Professions	543	614	578	501	507
Dolan School of Business	175	208	212	205	191
School of Nursing	118	130	150	154	152
College of Arts & Sciences	59	140	187	166	147
School of Engineering	138	139	131	130	123
University College	11	0	0	0	N/A
TOTAL GRADUATE	1,044	1,231	1,258	1,156	1,120
TOTAL UNIVERSITY ENROLLMENT	5,128	5,117	5,181	4,991	4,734

* Excludes students on Education Leave for non-Fairfield programs

Beginning Fall 2012, students previously enrolled in University College have been reassigned into new undergraduate colleges and/or programs

FALL ENROLLMENT
Full-Time/Part-Time Head Count

Fall	Undergraduate*				Graduate		
	FT	PT	Total		FT	PT	Total
1955			749				336
1960			1,260				592
1965	1,389	37	1,426		40	828	868
1970	2,105	8	2,113		122	1,380	1,502
1975	2,727	490	3,217		110	1,558	1,668
1980	2,961	1,130	4,091		89	882	971
1985	3,017	1,041	4,058		76	943	1,019
1990	3,017	1,027	4,044		88	689	777
1995	3,027	1,186	4,213		147	620	767
1996	3,100	1,164	4,264		146	701	847
1997	3,129	1,140	4,269		166	744	910
1998	3,224	1,057	4,281		164	763	927
1999	3,228	836	4,064		166	897	1,063
2000	3,401	772	4,173		169	846	1,015
2001	3,399	765	4,164		153	837	990
2002	3,387	686	4,073		192	849	1,041
2003	3,381	639	4,020		228	805	1,033
2004	3,305	637	3,942		232	886	1,118
2005	3,485	588	4,073		243	857	1,100
2006	3,460	548	4,008		270	813	1,083
2007	3,395	546	3,941		235	759	994
2008	3,469	615	4,084		250	794	1,044
2009	3,330	565	3,895		351	880	1,231
2010	3,385	536	3,921		389	922	1,311
2011	3,318	524	3,824		383	773	1,156
2012	3,471	408	3,879		370	750	1,120

* Includes University College and School of Engineering credit students; does not include students enrolled in Fairfield University's programs abroad pre-2008

FALL ENROLLMENT
Full-Time Equivalent (FTE)*

Fall	Undergraduate	Graduate	Total
1965	1,401	316	1,717
1970	2,108	582	2,690
1975	2,890	629	3,519
1980	3,337	383	3,720
1985	3,364	390	3,754
1990	3,359	318	3,677
1995	3,422	354	3,776
1996	3,488	380	3,868
1997	3,509	414	3,923
1998	3,576	418	3,994
1999	3,507	465	3,972
2000	3,658	451	4,109
2001	3,654	432	4,086
2002	3,616	475	4,091
2003	3,594	496	4,090
2004	3,517	527	4,044
2005	3,681	529	4,210
2006	3,643	541	4,184
2007	3,577	488	4,065
2008	3,674	515	4,189
2009	3,518	644	4,162
2010	3,566	679	4,245
2011	3,535	641	4,176
2012	3,607	620	4,227

** Includes University College and School of Engineering credit students; does not include students enrolled in Fairfield University's programs abroad before 2008*

FULL-TIME UNDERGRADUATE ENROLLMENT

Fall 2012

College of Arts and Sciences	Men	Women	Total
Freshmen	159	364	523
Sophomores	177	316	493
Juniors	148	307	455
Seniors	158	270	428
Subtotal	642	1,257	1,899
Dolan School of Business			
Freshmen	184	160	344
Sophomores	169	125	294
Juniors	140	96	236
Seniors	142	92	234
Subtotal	635	473	1,108
School of Nursing			
Freshmen	0	77	77
Sophomores	6	69	75
Juniors	6	97	103
Seniors	0	65	65
Subtotal	12	308	320
School of Engineering			
Freshmen	38	8	46
Sophomores	40	6	46
Juniors	21	5	26
Seniors	23	3	26
Subtotal	122	22	144
Total Full-Time Undergraduate			
Freshmen	381	609	990
Sophomores	392	516	908
Juniors	315	505	820
Seniors	323	430	753
TOTAL	1,411	2,060	3,471

GRADUATE ENROLLMENT Fall 2012

College of Arts and Sciences	Full-Time		Part-Time		Total
	Men	Women	Men	Women	
American Studies	0	2	8	15	25
Communication	2	4	6	23	35
Creative Writing (MFA)	28	32	3	3	66
Mathematics	3	1	12	5	21
Subtotal	33	39	29	46	147
Dolan School of Business					
Accounting	21	17	0	2	40
Business Administration (MBA)	23	15	41	29	108
Finance	12	5	10	3	30
Taxation	0	0	6	0	6
Certification	1	0	3	3	7
Subtotal	57	37	60	37	191
Graduate School of Education and Allied Professions					
Counselor Education	4	13	16	80	113
Educational Studies and Teacher Preparation	9	39	17	75	140
Marriage and Family Therapy	4	27	8	38	77
Psychological and Educational Consultation	6	22	3	26	57
Special Education	3	12	6	69	90
Educational Technology	0	1	7	20	28
Undeclared	0	0	0	2	2
Subtotal	26	114	57	310	507
School of Engineering					
Electrical and Computer Engineering	3	3	9	2	17
Management of Technology	11	3	19	7	40
Mechanical Engineering	3	0	12	0	15
Software Engineering	11	8	22	7	48
Certification	0	0	2	1	3
Subtotal	28	14	64	17	123
School of Nursing					
Nursing	0	2	10	68	80
Nurse Anesthesia	4	8	5	18	35
Doctor of Nursing	0	8	3	26	37
Subtotal	4	18	18	112	152
TOTAL GRADUATE ENROLLMENT	148	222	228	522	1,120

MAJORS OF STUDENTS ENROLLED IN FULL-TIME UNDERGRADUATE PROGRAMS Fall 2012

College of Arts and Sciences	Class of 2016	Class of 2015	Class of 2014	Class of 2013	Educ Leave*	Total 1st Majors	Total 2nd Majors
Bachelor of Arts							
American Studies	2	4	1	0	0	7	1
Communication	49	59	91	79	7	278	11
Economics	6	5	16	20	0	47	3
English	26	45	58	49	3	178	16
History	13	11	18	17	0	59	6
Individually Designed Major	0	0	4	2	1	6	3
International Studies	11	13	7	19	1	50	14
Modern Languages & Literatures	2	1	6	11	1	20	22
Philosophy	1	5	3	1	0	10	4
Politics	14	17	24	26	1	81	8
Psychology	36	47	51	51	5	185	7
Religious Studies	1	1	1	2	0	5	1
Sociology and Anthropology	7	9	22	25	0	63	4
Visual and Performing Arts	42	23	28	27	3	120	32
Arts and Sciences Undeclared	190	146	22	0	0	358	N/A
Total Bachelor of Arts	400	386	352	329	22	1,467	132
Bachelor of Science							
Biochemistry	13	11	6	2	0	32	0
Biology	64	53	54	41	1	212	4
Chemistry	6	4	5	6	0	21	0
Computer Science	5	4	4	1	0	14	1
Economics	2	2	8	5	0	17	9
Individually Designed Major	0	1	0	0	0	1	0
Mathematics	8	10	11	29	0	58	4
Physics	0	3	1	2	0	6	1
Professional Studies	0	0	0	1	0	1	0
Psychology	24	19	14	12	2	69	1
Arts and Sciences Undeclared	1	0	0	0	0	1	N/A
Total Bachelor of Science	123	107	103	99	3	432	20
Total Arts and Sciences	523	493	455	428	25	1,899	152
Dolan School of Business							
Accounting	38	39	66	62	2	205	13
Finance	57	40	50	53	4	200	25
Information Systems	3	1	4	2	0	10	4
International Business	15	10	19	16	1	60	4
Management	50	43	18	32	2	143	5
Marketing	57	45	47	57	8	206	19
Business Undeclared	124	116	32	12	3	284	N/A
Total Business	344	294	236	234	20	1,108	70
School of Nursing							
Total Nursing	77	75	103	65	0	320	1
School of Engineering							
Automated Manufacturing Engineering	1	0	0	2	0	3	0
Computer Engineering	3	2	3	0	0	8	0
Cooperative Engineering	5	2	0	0	0	7	0
Electrical Engineering	6	4	7	6	0	23	0
Mechanical Engineering	13	26	16	17	1	72	0
Software Engineering	4	1	0	1	0	6	0
Engineering Undeclared	14	11	0	0	0	25	N/A
Total Engineering	46	46	26	26	1	144	0
GRAND TOTAL	990	908	820	753	46	3,471	223

* All Fairfield students who are on educational leave are included in the Total 1st Majors Column and the Total 2nd Majors Column

FULL-TIME UNDERGRADUATE RESIDENT STATUS

Fall#	On-Campus Residents*		Off-Campus Boarders & Commuters		Total
	Head Count	%	Head Count	%	
1998	2,324	73	845	27	3,169
1999	2,325	74	826	26	3,151
2000	2,614	78	729	22	3,343
2001	2,593	77	759	23	3,352
2002	2,605	79	703	21	3,311 ^
2003	2,543	77	752	23	3,295 ^
2004	2,579	80	650	20	3,229 ^
2005	2,687	77	798	23	3,485 ^
2006	2,705	78	765	22	3,460 ^
2007	2,590	74	894	26	3,484 ^
2008	2,597	75	872	25	3,469 ^
2009	2,531	76	789	24	3,320 ^
2010	2,526	75	862	25	3,388 ^
2011	2,705	80	680	20	3,385 ^
2012	2,790	83	681	17	3,471

* Including Resident Hall Advisors who are full-time students

Source: Residence Life Bi-Annual Report, Previous year's Registrar's October 1 Report

^ Includes General Studies students

UNDERGRADUATE ENROLLMENT by RACE/ETHNICITY*
Fall Enrollment Trends

Full-Time Students	2008	2009	2010	2011	2012	2012 % of Enrollment
Non-resident Aliens	32	42	49	52	53	1.5%
Black or African-American	112	127	84	98	105	3.0%
American Indian or Alaskan Native	15	18	2	3	5	0.1%
Asian*	N/A	N/A	37	44	83	2.4%
Asian or Pacific Islander*	126	111	N/A	N/A	N/A	N/A
Hispanic of any race(s)	261	277	90	109	280	8.1%
White	2,434	2,190	822	1,453	2,431	70.0%
Race/Ethnicity unknown	489	555	2,283	1,591	478	13.8%
Native Hawaiian or Pacific Islander*	N/A	N/A	3	3	1	0.0%
Two or more races*	N/A	N/A	18	32	35	1.0%
TOTAL	3,469	3,320	3,388	3,385	3,471	
Part-Time Students						
Non-resident Aliens	8	19	9	5	8	2.0%
Black or African-American	31	36	19	15	22	5.4%
American Indian or Alaskan Native	1	2	1	0	0	0.0%
Asian*	N/A	N/A	5	6	6	1.5%
Asian or Pacific Islander*	9	11	N/A	N/A	N/A	N/A
Hispanic of any race(s)	36	37	13	25	26	6.4%
White	386	355	107	112	160	39.2%
Race/Ethnicity unknown	144	106	381	286	182	44.6%
Native Hawaiian or Pacific Islander*	N/A	N/A	0	1	1	0.2%
Two or more races*	N/A	N/A	0	0	3	0.7%
TOTAL	615	566	535	450	408	

**Federal Race/Ethnicity reporting categories changed in 2010*

**FIRST-YEAR STUDENTS
by Race, Ethnicity and Pell**

	Class of 2016		Class of 2015		Class of 2014*		Class of 2013	
	Fall 2012		Fall 2011		Fall 2010		Fall 2009	
	Original	%	Original	%	Original	%	Original	%
Cohort Size	990		909		922		849	
Men	381	38.5%	377	41.5%	346	37.5%	369	43.5%
Women	609	61.5%	532	58.5%	576	62.5%	480	56.5%
AHANA	117	11.8%	87	9.6%	144	15.6%	135	15.9%
Hispanic of any race(s)	69	7.0%	33	3.6%	57	6.2%	67	7.9%
American Indian or Alaskan Native	1	0.1%	1	0.1%	1	0.1%	3	0.4%
Asian	21	2.1%	11	1.2%	25	2.7%	N/A	N/A
Asian or Pacific Islander (2009 category)	N/A	N/A	N/A	N/A	N/A	N/A	30	3.5%
Black or African American	21	2.1%	28	3.1%	43	4.7%	27	3.2%
Native Hawaiian or Pacific Islander	0	0.0%	1	0.1%	0	0.0%	N/A	N/A
White	767	77.5%	694	76.3%	641	69.5%	540	63.6%
Two or More Ethnicities	5	0.5%	13	1.4%	18	2.0%	N/A	N/A
Race/Ethnicity Unknown	87	8.8%	118	13.0%	123	13.3%	167	19.7%
Non-Resident Alien	19	1.9%	10	1.1%	14	1.5%	15	1.8%
Pell Recipients	128	12.9%	123	13.5%	187	20.3%	122	14.4%

**Class of 2014 and forward is New Federal Race/Ethnicity reporting categories, as of 2010*

INTERNATIONAL STUDENTS

Fall 2012

Enrollment by Class Year			
Undergraduate	Male	Female	Total
Class of 2013	7	3	10
Class of 2014	7	6	13
Class of 2015	4	4	8
Class of 2016	10	9	19
Visiting Students	1	5	6
Part-time Undergraduates	2	0	2
Non-Degree Undergraduate Students	0	1	1
Certificate Undergraduate Students	1	1	2
Undergraduate Total	32	29	61
Enrollment by School			
Undergraduate*	Male	Female	Total
College of Arts and Sciences	13	19	32
Dolan School of Business	10	5	15
School of Engineering	8	3	11
School of Nursing	0	1	1
Certificate Programs	1	1	2
Undergraduate Total	32	29	61
Graduate*	Male	Female	Total
College of Arts and Sciences	4	5	9
Dolan School of Business	22	15	37
Graduate School of Education and Allied Professions	2	3	5
School of Engineering	27	15	42
School of Nursing	0	1	1
Graduate Total	55	39	94
TOTAL INTERNATIONAL STUDENTS	87	68	155
<i>* Full-time and Part-time</i>			

FIRST-YEAR STUDENT ADMISSION TREND

Fall	Applications					Admitted					Enrolled					
	CAS	SON	DSB	SOE	Total	CAS	SON	DSB	SOE	Total	CAS	SON	DSB	SOE	GS	Total
1970	N/A	N/A	N/A	N/A	2,249	N/A	N/A	N/A	N/A	1,346	N/A	N/A	N/A	N/A	N/A	698
1975	2,341	305	N/A	N/A	2,646	1,465	76	N/A	N/A	1,541	717	44	N/A	N/A	N/A	761
1980	2,777	348	1,259	N/A	4,384	1,307	122	472	N/A	1,901	497	50	205	N/A	N/A	752
1985	3,529	240	1,920	N/A	5,689	1,428	143	618	N/A	2,189	509	40	237	N/A	N/A	786 *
1990	3,541	165	1,274	N/A	4,980	1,957	123	628	N/A	2,708	536	32	188	N/A	N/A	756 *
1995	3,445	232	1,164	N/A	4,841	2,425	170	830	N/A	3,425	532	43	223	N/A	N/A	798 *
2000	4,408	190	1,748	150	6,499	2,785	142	1,041	110	4,078	641	44	303	20	N/A	1,008
2001	4,718	199	2,016	194	7,128	2,392	142	825	144	3,504	541	37	225	29	N/A	832
2002	4,713	209	1,770	281	6,974	2,340	165	832	126	3,463	531	40	224	19	31	845
2003	5,065	327	1,994	269	7,655	2,558	214	857	153	3,782	509	46	207	21	33	816
2004	4,604	403	1,861	268	7,136	3,039	247	1,063	198	4,547	533	50	248	24	37	892
2005	4,411	413	1,803	268	6,895	3,349	274	1,274	233	5,130	573	62	278	24	50	980
2006	4,951	513	2,275	296	8,035	3,102	296	1,242	226	4,866	586	68	236	29	4	923
2007	5,164	564	2,499	330	8,557	2,915	271	1,251	249	4,686	485	54	242	31	30	842
2008	5,113	635	2,565	419	8,732	3,102	318	1,432	305	5,157	496	65	266	36	36	899
2009	5,000	672	2,278	365	8,315	3,267	318	1,487	256	5,328	491	67	243	23	25	849
2010	5,201	785	1,978	453	8,420	3,815	426	1,417	318	6,024	545	94	224	32	27	922
2011	4,991	900	2,063	533	8,487	3,656	364	1,510	362	5,892	490	74	288	41	16	909
2012	5,290	949	2,398	619	9,256	3,991	398	1,786	410	6,585	523	77	344	46	N/A	990

* Prior to 1995, non-first-time freshman are included in count

FIRST-YEAR STUDENT PROFILE Class of 2016

Admissions Numbers

First-time Freshmen	Men	Women	Total
Applications	3,759	5,495	9,254
Admitted	2,578	4,007	6,585
Enrolled as of October 1, 2012	381	609	990
Admit Rate			71%
Yield Rate			15%

Distribution of SAT Scores

SAT Scores	Critical Reading (% of class)	Math (% of class)	Writing (% of class)
700-800	3%	3%	3%
600-699	18%	26%	22%
500-599	30%	23%	26%
400-499	4%	3%	4%
300-399	0%	0%	0%

** 45% did not submit scores/test optional*

Quartiles	Critical Reading	Math	Writing	Combined
25th percentile	530	550	540	1620
75th percentile	620	630	640	1890

Accomplishments		Additional Information	
National Honor Society	323	AHANA students	117
National Merit Commended	8	On-Campus Residents	936
President/VicePresident - Student Government	141	States Represented (incl. Puerto Rico)	23
School Newspaper/Yearbook Editor	90	Foreign Countries Represented	6
Book Awards	31	International Students	19
Eagle Scout	13	College or School of Enrollment	
Girl Scout Gold Award	13	College of Arts and Sciences	523
Boys/Girls State Representatives	13	Dolan School of Business	344
Hugh O'Brien Youth Leadership Award	9	School of Nursing	77
Service/Volunteer Work	699	School of Engineering	46

Average High School GPA

Class of 2016	3.36
---------------	------

FIRST-YEAR STUDENT COHORT SAT QUARTILES

	CRITICAL READING			MATH			WRITING			COMBINED		
	25%	50%	75%	25%	50%	75%	25%	50%	75%	25%	50%	75%
Class												
2001	520	560	600	520	570	610				1060	1130	1210
2002	510	560	610	530	580	620				1160	1130	1220
2003	550	570	630	550	580	640				1100	1150	1270
2004	540	580	630	550	590	630				1100	1170	1250
2005	540	580	630	550	600	640				1100	1180	1260
2006	540	590	630	570	610	650				1130	1200	1260
2007	550	590	630	560	610	650				1120	1200	1270
2008	540	590	630	560	610	650				1120	1190	1280
2009	550	590	630	560	600	640				1120	1190	1250
2010	540	580	630	550	600	640				1670	1780	1890 #
2011	530	580	620	550	590	640				1660	1770	1870
2012	520	560	610	540	580	630	540	580	630	1620	1730	1850
2013	520	570	610	530	570	630	530	580	630	1610	1730	1850
2014*	530	560	620	540	580	630	540	580	630	1640	1740	1850
2015	530	570	620	540	590	630	540	590	630	1610	1750	1880
2016	530	570	620	550	600	630	540	590	640	1620	1760	1890

* Beginning with Class of 2014, Fairfield University became test optional

Writing SAT began but not reported in Admissions data until Class of 2012

FIRST-YEAR STUDENT GEOGRAPHIC DISTRIBUTION
Class of 2016

United States	Headcount	Outside U.S.	Headcount
Arizona	1	Australia	1
California	10	China	2
Connecticut	234	India	1
Delaware	1	Morroco	1
Florida	6	Russia	1
Georgia	3	United Kingdom	3
Illinois	4		
Massachusetts	175		
Maryland	5		
Maine	8		
Michigan	1		
Minnesota	2		
New Hampshire	9		
New Jersey	173		
New York	277		
Ohio	1		
Pennsylvania	29		
Puerto Rico	1		
Rhode Island	31		
Texas	3		
Vermont	2		
Virginia	3		
Wisconsin	2		

**UNIVERSITY GEOGRAPHIC DISTRIBUTION
Fall 2012**

	Full-time Undergraduate Students					Full-time Graduate Students					
	CAS	DSB	SOE	SON	Total	CAS	DSB	GSEAP	SOE	SON	Total
New England States											
Connecticut	593	261	53	100	1,007	42	33	120	6	15	216
Maine	9	4	0	3	16	1	0	0	0	0	1
Massachusetts	336	198	16	65	615	1	1	5	0	0	7
New Hampshire	27	7	0	5	39	0	0	0	0	0	0
Rhode Island	43	14	5	2	64	2	0	0	0	0	2
Vermont	3	1	0	2	6	0	0	0	0	0	0
Subtotal	1,011	485	74	177	1,747	46	34	125	6	15	226
Middle Atlantic States											
Delaware	2	2	0	0	4	0	0	0	0	0	0
Maryland	8	14	1	0	23	3	0	1	0	1	5
New Jersey	261	213	19	55	548	2	12	2	0	1	17
New York	455	294	28	70	847	7	13	6	3	2	31
Pennsylvania	44	26	4	8	82	3	0	1	0	0	4
Subtotal	770	549	52	133	1,504	15	25	10	3	4	57
Other States & U.S. Territories											
Other States (19)	70	46	3	7	126	8	0	0	0	2	10
Puerto Rico	10	6	0	0	16	0	0	0	1	0	1
Subtotal	80	52	3	7	142	8	0	0	1	2	11
Foreign Countries (28)											
International Students	29	14	9	1	53	3	35	5	32	1	76
Visiting Students	6	2	6	1	15	0	0	0	0	0	0
U.S. Citizens Living in Other Countries	3	6	0	1	10	0	0	0	0	0	0
Subtotal	38	22	15	3	78	3	35	5	32	1	76
TOTAL	1,899	1,108	144	320	3,471	72	94	140	42	22	370

FRESHMAN-TO-SOPHOMORE RETENTION
Original Cohort, AHANA, General Studies

Class	Original Cohort	Returned Year Two	AHANA	Returned Year Two	General Studies	Returned Year Two
2000	876	85.7%	96	80.2%	N/A	N/A
2001	876	89.0%	85	83.5%	N/A	N/A
2002	875	89.1%	111	88.2%	N/A	N/A
2003	837	87.6%	72	86.1%	N/A	N/A
2004	1,008	90.1%	91	89.0%	N/A	N/A
2005	831	89.9%	121	85.1%	N/A	N/A
2006	814	85.1%	99	86.0%	31	93.4%
2007	789	90.6%	91	86.8%	33	90.9%
2008	855	90.9%	68	87.0%	39	87.2%
2009	940	88.9%	82	89.0%	42	73.8%
2010	898	88.3%	162	90.7%	27	88.9%
2011	812	90.3%	140	85.7%	30	73.3%
2012	899	87.5%	174	90.8%	36	77.8%
2013	849	88.7%	135	90.4%	25	92.0%
2014*	922	88.4%	182	92.9%	27	100.0%
2015	909	87.1%	111	85.6%	16	87.5%
2016	990		117			

** New Federal Race/Ethnicity reporting categories, as of 2010*

RETENTION AND GRADUATION RATES

Class of	Original Cohort Size*	Returned 2nd Year	Returned 3rd Year	(Graduated or) Returned 4th Year	Graduated within 4 Years	Graduated within 5 Years	Graduated within 6 Years
2016	990						
2015	909	87.1%					
2014	922	88.4%	84.6%				
2013	849	88.7%	84.3%	82.3%			
2012	899	87.7%	83.1%	80.6%	76.3%		
2011	842	89.8%	84.3%	83.3%	77.3%	81.2%	
2010	923	88.5%	83.4%	82.2%	75.8%	81.0%	80.5%
2009	980	88.5%	85.0%	83.5%	76.8%	81.5%	82.2%
2008	892	90.7%	86.2%	84.8%	77.7%	81.3%	82.5%
2007	816	90.7%	88.1%	86.4%	81.4%	84.7%	85.3%
2006	842	85.4%	81.9%	80.0%	72.4%	77.8%	79.1%
2005	831	89.9%	84.0%	81.3%	77.7%	80.1%	80.6%
2004	1,008	90.1%	85.7%	83.1%	79.1%	80.8%	81.5%
2003	837	87.6%	84.1%	82.7%	79.4%	81.1%	81.2%
2002	875	89.1%	81.9%	80.1%	77.7%	79.8%	80.5%
2001	876	89.0%	81.7%	79.7%	74.0%	78.2%	78.4%
2000	876	85.7%	77.5%	75.6%	73.4%	76.4%	77.3%
1999	784	88.9%	80.5%	80.5%	76.8%	79.6%	79.8%
1998	795	87.3%	77.6%	78.4%	74.6%	77.0%	77.6%
1997	773	88.5%	N/A	N/A	77.0%	79.4%	79.7%
1996	860	87.2%	N/A	N/A	78.0%	80.8%	80.9%
1995	749	88.5%	N/A	N/A	79.7%	82.1%	82.6%

* First-time, full-time Freshmen (including General Studies); percentages are calculated using the adjusted cohort size, if different

UNDERGRADUATE TRANSFER ADMISSIONS

	Applications	Acceptances	Enrolled	Yield
Fall 2002	230	124	65	52%
Spring 2003	86	43	24	58%
Fall 2003	242	132	70	54%
Spring 2004	75	36	15	42%
Fall 2004	199	104	58	56%
Spring 2005	77	34	16	47%
Fall 2005	195	81	41	51%
Spring 2006	39	13	9	69%
Fall 2006	207	67	35	52%
Spring 2007	56	12	6	50%
Fall 2007	249	79	29	37%
Spring 2008	68	24	15	63%
Fall 2008	293	83	28	34%
Spring 2009	66	19	10	53%
Fall 2009	273	101	37	37%
Spring 2010	79	24	10	42%
Fall 2010	225	99	33	33%
Spring 2011	85	41	17	42%
Fall 2011	233	102	27	26%
Spring 2012	99	47	20	43%
Fall 2012	262	115	39	34%

BACCALAURATE DEGREES AWARDED

By Major

College of Arts and Sciences	2008	2009	2010	2011	2012
American Studies	1	1	0	1	0
Biochemistry		0	0	4	1
Biology	33	50	37	29	29
Chemistry	15	6	3	8	7
Communication	93	72	93	72	73
Computer Science	4	3	2	2	6
Economics (BA/BS)	29	32	30	29	31
English	51	65	67	66	64
History	17	23	20	15	10
Individually Designed Major	1	1	4	2	3
International Studies (BA)	25	25	40	31	18
Mathematics	22	15	23	14	16
Modern Languages & Literatures					
French	2	2	1	3	2
German	0	0	1	0	3
Italian	1	0	0	1	1
Spanish	3	4	4	2	10
Philosophy	4	3	3	3	3
Physics	2	0	1	2	4
Politics	36	37	29	27	43
Professional Studies	N/A	N/A	N/A	N/A	10
Psychology (BA/BS)	71	80	62	61	60
Religious Studies	5	1	1	4	1
Sociology and Anthropology	27	24	18	7	38
Visual and Performing Arts	26	35	34	33	50
Total Arts and Sciences	468	479	473	416	483
Dolan School of Business					
Accounting	68	62	54	74	65
Finance/Financial Mgmt	115	112	105	93	64
Information Systems	8	3	13	6	5
International Business Mgmt	11	16	10	12	10
Management	32	32	34	31	22
Marketing	71	94	76	77	93
Total Business	305	319	292	293	259
School of Engineering					
Computer Engineering	1	5	1	3	4
Electrical Engineering	2	7	4	4	9
Mechanical Engineering	15	27	18	15	18
Software Engineering	1	0	2	1	1
3/2 Engineering	0	0	0	0	0
Total Engineering	19	39	25	23	32
School of Nursing					
Nursing					
Total Nursing	84	81	117	111	127
University College					
Professional Studies	10	17	13	13	N/A
Professional Studies on-line	N/A	N/A	2	0	N/A
Total University College	10	17	15	13	0
GRAND TOTAL	886	935	922	856	901

MASTER'S DEGREES AWARDED

By Program

College of Arts and Sciences	2008	2009	2010	2011	2012
American Studies	9	18	3	14	6
Communication	7	16	0	4	8
Creative Writing (MFA)	0	0	0	25	34
Mathematics	20	13	10	9	11
Total Arts and Sciences	36	47	13	52	59
Dolan School of Business					
Business Administration	51	45	41	49	45
Accounting	13	10	12	24	37
Finance/Financial Management	14	12	15	15	23
Taxation	1	4	7	2	8
Total Business	79	71	75	90	113
Graduate School of Education and Allied Professions					
Foundations in Education	24	38	25	25	23
Bilingual Education	0	1	2	0	2
Administration & Supervision	0	0	0	0	0
Education Media (Technology)	9	8	11	5	9
School & Applied Psychology:	34	23	N/A	N/A	N/A
Applied Psychology-Foundation of Advanced Psych	N/A	N/A	1	2	1
Applied Psychology-Industrial & Organizational Psych	N/A	N/A	0	2	11
School Psychology	N/A	N/A	11	10	7
Applied Psychology-Human Services	N/A	N/A	5	3	1
Special Education	10	18	24	54	27
Clinical Mental Health & School Counseling	28	31	17	0	35
Elementary Education	16	11	10	17	10
Teaching English as a Second Language	8	10	8	12	6
Instructional Application of Computers	1	0	0	0	0
Marriage & Family Therapy	17	17	15	21	15
Total GSEAP	147	157	129	151	147
School of Engineering					
Software Engineering	22	21	18	15	20
Electrical and Computer Engineering	7	12	12	3	15
Mechanical Engineering	7	8	9	1	7
Management of Technology	16	6	16	18	13
Dual Degree BS/MS in Software Engineering	N/A	N/A	0	1	0
Total Engineering	52	47	55	38	55
School of Nursing					
Graduate Nursing Practice Program	0	0	0	0	0
Advanced Practice Nursing	10	12	16	0	31
Nurse Anesthesia	0	9	14	15	14
Total Nursing	10	21	30	15	45
GRAND TOTAL	324	343	302	346	419

DEGREES AWARDED BY SCHOOL

Cumulative

Class of	Associate's	Bachelor's					Master's					
		SOE	CAS	DSB	SON	UC	GSEAP	UC	SOE	CAS	DSB	SON
1951	N/A	N/A	214	N/A	N/A	N/A	9	N/A	N/A	N/A	N/A	N/A
1960	N/A	N/A	227	N/A	N/A	N/A	114	N/A	N/A	N/A	N/A	N/A
1970	N/A	N/A	399	N/A	N/A	N/A	230	7	N/A	N/A	N/A	N/A
1975	N/A	N/A	466	N/A	31	N/A	288	36	N/A	N/A	N/A	N/A
1980	N/A	N/A	373	218	40	N/A	172	65	N/A	N/A	N/A	N/A
1985	N/A	N/A	423	278	56	N/A	139	62	N/A	N/A	5	N/A
1990	8	N/A	480	241	45	N/A	122	45	N/A	N/A	21	N/A
1995	13	19	490	187	75	N/A	139	N/A	N/A	N/A	18	N/A
1996	16	36	541	185	81	N/A	114	N/A	N/A	N/A	34	26
1997	27	27	477	197	83	N/A	108	N/A	N/A	N/A	32	1
1998	15	18	496	208	66	N/A	123	N/A	N/A	N/A	44	21
1999	19	15	432	273	61	N/A	144	N/A	N/A	N/A	51	6
2000	22	14	446	302	50	4	127	N/A	17	N/A	67	9
2001	13	24	492	253	53	6	133	N/A	47	3	60	15
2002	20	23	491	295	40	2	107	N/A	59	15	80	11
2003	11	27	464	301	37	3	144	N/A	59	6	107	7
2004	13	29	551	358	55	3	119	N/A	73	12	80	9
2005	12	32	476	246	86	10	138	9	41	7	81	11
2006	2	25	452	269	71	7	141	17	56	28	78	9
2007	6	31	486	252	79	13	163	12	59	21	78	6
2008	3	19	468	305	84	10	147	7	52	29	79	10
2009	2	39	479	319	81	17	157	16	47	31	71	21
2010	6	25	473	292	117	15	135	N/A	55	13	75	30
2011	7	23	416	293	111	13	185	N/A	38	52	90	39
2012	2	32	401	234	127	107	147	N/A	55	59	113	45
TOTAL	217	458	11,113	5,506	1,529	210	3,545	276	658	276	1,264	276

FINANCIAL AID DATA

	2007-08	2008-09	2009-10	2010-11	2011-12
Institutional aid budget, excluding athletics	\$28,433,000	\$31,655,722	\$37,923,000	\$40,581,000	\$45,435,000
Institutional aid budget, including athletics	\$31,895,000	\$36,629,722	\$43,285,000	\$46,258,000	\$51,338,000
% FT undergraduates receiving any grant or scholarship	58.8%	57.3%	58.0%	63.0%	63.0%
Tuition and Fees (not including Room & Board)	\$33,905	\$36,075	\$37,490	\$39,040	\$40,490
Average total aid package - First-Year Students	\$25,541	\$27,488	\$29,123	\$29,154	\$26,751
Average need-based grant - First-Year Students	\$20,313	\$21,344	\$24,000	\$22,916	\$18,651
Average need-based loan - First-Year Students*	\$4,591	\$3,980	\$4,012	\$3,892	\$4,034
% Graduating seniors who borrowed#	60.0%	59.0%	58.0%	63.0%	63.0%
Average cumulative debt per borrower	\$31,984	\$32,857	\$35,161	\$37,015	\$31,099

* Excludes PLUS loans, unsubsidized loans, and private alternative loans

Any educational loans in any year

UNIVERSITY FACULTY*
Fall 2012

Full-time Faculty			
	Men	Women	Total
CAS	85	78	163
DSB	26	17	43
SOE	8	2	10
SON	0	22	22
GSEAP	3	22	25
TOTAL	122	141	263

Part-time Faculty			
	Men	Women	Total
CAS	114	95	209
DSB	16	9	25
SOE	27	1	28
SON	1	22	23
GSEAP	11	28	39
TOTAL	169	155	324

** Includes faculty on sabbatical or leave of absence and VA Nursing faculty*

Student to Faculty Ratio: 11 to 1
(based on 3,607 students and 341 faculty)*

** Full-time Equivalent (FTE) numbers = Full-time + 1/3 Part-time*

FULL-TIME FACULTY
By Program, Rank & Gender, Fall 2012

College of Arts & Sciences	Professor		Associate		Assistant		Instructor		Total	
	Men	Women	Men	Women	Men	Women	Men	Women	Men	Women
American Studies	1	0	0	0	0	0	0	0	1	0
Applied Ethnics	0	0	1	0	0	0	0	0	1	0
Biology	0	3	3	2	0	4	0	1	3	10
Chemistry	1	0	3	0	1	3	0	0	5	3
Classical Studies	1	0	0	0	0	0	0	0	1	0
Communication	0	0	1	3	2	2	0	0	3	5
Economics	2	1	2	1	1	1	1	0	6	3
English	2	2	3	4	3	4	0	0	8	10
History	3	1	2	2	2	1	0	0	7	4
International Studies	0	1	0	0	0	0	0	0	0	1
Math/Computer Science	5	2	4	1	1	1	0	0	10	4
Modern Languages	1	1	1	3	2	3	0	1	4	8
New Humanities	0	0	0	0	0	0	0	0	0	0
Philosophy	3	1	4	1	2	1	0	0	9	3
Physics	2	0	1	1	1	0	0	0	4	1
Politics	1	1	2	1	0	3	0	0	3	5
Psychology	1	3	1	1	1	2	0	0	3	6
Religious Studies	5	1	1	2	2	0	0	0	8	3
Sociology	2	0	3	1	0	2	0	0	5	3
Visual & Performing Arts	2	3	2	4	0	2	0	0	4	9
Total Arts and Sciences	32	20	34	27	18	29	1	2	85	78
Dolan School of Business										
Accounting	1	2	2	1	3	2	0	0	6	5
Business Ethics	0	0	0	0	0	0	0	0	0	0
Finance	3	0	3	1	1	1	0	0	7	2
Information Systems	2	0	3	0	1	0	0	0	6	0
Management	2	3	1	3	1	0	0	0	4	6
Marketing	1	0	1	2	1	2	0	0	3	4
Total Business	9	5	10	7	7	5	0	0	26	17
School of Engineering										
Total Engineering	4	0	3	0	1	2	0	0	8	2
School of Nursing										
Total Nursing	0	3	0	2	0	17	0	0	0	22
Graduate School of Education and Allied Professions										
Counselor of Education	0	1	0	3	0	0	0	0	0	4
Educational & Teacher Prep	0	2	0	5	0	1	0	0	0	8
Education Technology	0	0	0	0	0	0	0	0	0	0
Educational Studies & Connecticut	0	0	0	0	1	0	0	0	1	0
Writing Project										
Marriage & Family Therapy	0	0	0	2	0	0	0	3	0	5
Psychology and Special Education	0	0	1	2	1	3	0	0	2	5
Total GSEAP	0	3	1	12	2	4	0	3	3	22
GRAND TOTAL	45	31	48	48	28	57	1	5	122	141

FULL-TIME FACULTY
By Highest Degree, School, and Tenure Status
Fall 2012

	Professor	Associate	Assistant	Instructor	Total	Percentage
Highest Degree						
Doctorate	73	92	70	1	236	90%
Masters (Terminal)	1	4	1	0	6	2%
Masters	1	1	12	5	19	7%
Bachelors	0	0	2	0	2	1%
TOTAL	75	97	85	6	263	

	Tenured	Non-Tenured	Non-Tenure Track Position	Total Full-time Faculty
By School				
College of Arts & Sciences	118	36	9	163
Dolan School of Business	32	7	4	43
School of Engineering	5	4	1	10
School of Nursing	6	7	9	22
Graduate School of Education and Allied Professionals	15	6	4	25
TOTAL	176	60	27	263
<i>Percent of Total</i>	67%	23%	10%	

**FULL-TIME FACULTY AVERAGE SALARY AND COMPENSATION
By Rank and AAUP IIA- Comparision*
2011-2012#**

	Fairfield University 2010-11	Fairfield University 2011-12	All Combined Average	Church Related Average	Private Independent Average	All Combined 95th Percentile
<u>SALARY</u>						
Professor	\$113,907	\$116,541	\$91,972	\$92,047	\$103,094	\$118,730
Associate	\$87,514	\$87,980	\$71,025	\$72,095	\$77,359	\$89,343
Assistant	\$73,980	\$74,294	\$60,656	\$60,338	\$65,046	\$75,155
<u>COMPENSATION</u>						
Professor	\$152,408	\$155,865	\$117,904	\$118,066	\$130,761	\$150,666
Associate	\$125,645	\$122,776	\$94,701	\$93,891	\$100,136	\$118,053
Assistant	\$102,310	\$104,934	\$80,165	\$77,547	\$83,361	\$97,911

* IIA institutions are defined as "institutions with post baccalaureate programs but not engaging in significant doctoral level education" (ACADEME 2012)

Source: ACADEME: The Annual Report on the Economic Status of the Profession 2011-12

**UNIVERSITY PERSONNEL
Fall 2012**

	Full-Time	Part-Time	Total	Full-Time Equivalent
Faculty	263	324	587	371
Administration/Management	101	0	101	101
Other Professionals	229	26	255	238
Technical & Paraprofessional	10	0	10	10
Clerical & Secretarial	117	79	196	143
Skilled Crafts	28	0	28	28
Service/Maintenance	36	1	37	36
GRAND TOTAL	784	430	1,214	927

DIMENNA - NYSELIUS LIBRARY

COLLECTION HOLDINGS							
Academic Year	Books	Periodicals Print	Periodicals Electronic	A.V. Titles	Microform (Reels)	Equivalent of Microforms	Micro-fiche
1970-71	112,414			537	6,238	N/A	0
1975-76	134,305*	1,254		1,428	10,225	38,765	910
1980-81	168,242	1,394		2,601	14,001	51,659	23,544
1985-86	195,611	1,616		3,549	14,604	40,808#	93,612
1990-91	223,644	1,820		4,267	15,150	52,381	203,753
1995-96	264,426	1,849		7,847	16,223	62,874	297,944
2000-01	301,191	1,787		7,491	16,852	96,619	629,106
2005-06	347,244^	1,614	15,949	10,757	17,463	106,890	725,709
2006-07	351,336^	1,502	23,618	11,192	17,605	109,679	734,580
2007-08	357,540^	1,424	31,000	11,810	17,736	108,948	743,556
2008-09	394,588^	1,170	33,235	12,788	17,848	109,916	752,126
2009-10	397,874^	597	46,220	13,399	17,935	110,311	755,200
2010-11	371,131^	528	52,602	14,386	17,948	110,493	756,891
2011-12	375,927^	515	60,671	15,416	17,951	110,615	758,108

COLLECTION CIRCULATION

Academic Year	Total
1970-71	62,578
1975-76	71,223
1980-81	79,606
1985-86	74,191
1990-91	81,134
1995-96	72,910
2000-01	45,225
2005-06	50,347
2006-07	51,034
2007-08	45,928^
2008-09	58,433^
2009-10	60,624^
2010-11	73,871^
2011-12	163,644^

* Adjusted after June 1976 inventory

Formula per the 1986 ALA Standard for College Libraries

^ Includes e-books

DIMENNA - NYSELIUS LIBRARY ACQUISITIONS

EXPENDITURES				
Academic Year	Books, Media, and Microforms	Electronic Subscriptions	Periodicals [^]	
1970-71	63,389	N/A	22,604	
1975-76*	93,271	N/A	39,444	
1980-81	124,787	N/A	72,521	
1985-86	194,761	N/A	132,469	
1990-91	283,546	16,000	213,713	
1995-96	339,747	56,801	317,430	
2000-01	509,570	153,443	398,318	
2005-06	411,476	319,427	565,530	
2006-07	497,551	285,864	616,449	
2007-08	501,194	523,383	623,958	
2008-09	539,168	484,224	611,077	
2009-10	460,766	408,568	699,248	
2010-11	455,186	609,973	600,695	
2011-12	434,144	518,523	611,599	

* Under revised auditing procedures, years after 1974-75 include monies from all sources

[^] Current Subscriptions

CHANGES						
Academic Year	Total Books Added*	Books Withdrawn	A.V. Titles	Periodicals [^]	Microform (Reels)	Micro-fiche
1970-71	8,750	598	47	62	927	0
1975-76	8,774	913	108	64	1,037	218
1980-81	6,768	1,001	257	(12)	592	6,428
1985-86	7,635	1,744	222	62	125	16,399
1990-91	9,214	4,477	362	10	75	18,056
1995-96	9,424	5,591	769	3	123	19,129
2000-01	10,129	1,907	902	(3)	141	13,473
2005-06	13,993#	894	556	(148)	142	10,751
2006-07	7,899	3,807	435	(112)	142	10,215
2007-08	8,320	2,116	618	(78)	131	10,184
2008-09	38,199#	1,151	1,049	(254)	112	10,576
2009-10	6,360#	3,074	611	(573)	87	3,074
2010-11	7,735	550	1,335	(69)	13	1,691
2011-12	7,619	2,783	1,381	(13)	3	1,217

* Including bound periodicals

Includes e-books

[^] Current subscriptions

SPECIAL LIBRARY COLLECTIONS AND SERVICES

1. University and Prep Archives.
The Library houses the archives of Fairfield University and Fairfield Preparatory School.
2. The Heritage Edition of the Saint John's Bible and a facsimile edition of the Book of Kells.
3. Over 170 electronic subscription databases for public use include Web of Science, ARTstor, ERIC, Book Index with Reviews, Films on Demand, Project Muse, JSTOR, Literature Resource Center, America: History and Life, Historical Abstracts, Health & Wellness Resource Center, PsycINFO, CINAHL, Philosophers Index, Religion Index, MLA Bibliography, NYT Historical (1851-2007), LexisNexis-Academic, Ovid Nursing, MathSciNet, Biography & Genealogy Master Index, and Catholic Periodical and Literature Index. Remote access is available to University affiliates.
4. Business sources available on campus or by remote access:
 - A. Mergent Online, an international corporate information database.
 - B. ABI/Inform Global, a citation and full-text resource to business periodicals.
 - C. Business and Company Resource Center, a citation and full-text integrated database for company profiles, brand information, rankings, investment reports, company histories, chronologies, periodicals, and newsletters.
 - D. RIA Checkpoint, a full-text service to Federal, State and Local and International tax research materials.
 - E. Morningstar database provides data analysis of stocks, mutual funds, exchange-traded funds, closed-end funds, and variable annuity/life subaccounts. Includes tools for analyzing stocks and managing stock portfolios.
5. Media Department, with audiovisual resources such as multimedia software, videocassettes, DVDs, audiotapes, audio CDs, and viewing and listening equipment. Special workstation for hearing and visually impaired users.
6. Curriculum collection, with texts, audiovisual material, and computer software, to support University programs in the field of Education.
7. Archive of Americana online and Microprint Collections:
 - A. 90,000 titles published in America between 1639 and 1819.
 - B. More than 5,000 English and American plays published between 1500 and 1830.
 - C. Landmarks of Science series contain more than three million pages of original texts of the works of major scientists.
 - D. More than 38 volumes and some 2,100 serial publications of the Federal Government from 1789 through 1883.
 - E. A portion of a series based on Blanck's Bibliography of American Literature. The complete set contains 10,000 to 15,000 titles by 300 authors with emphasis on "belles lettres". Titles cover a 150-year span from the Federal period to authors who died before 1930.
8. Computer lab and study space available 24 hours/day. Café and vending machines.
9. Auditorium with seating for 90 and full sound and projection capability.

UNIVERSITY ALUMNI

Fall 2012

	Undergraduate			Graduate*		
	Men	Women	Total	Men	Women	Total
Living Alumni	20,130	16,856	36,986	3,929	7,426	11,355

** Excludes Graduate Alumni who are also Undergraduate Alumni*

UNDERGRADUATE ALUMNI by STATE

State	Headcount	State	Headcount
Alaska	15	Montana	18
Alabama	23	North Carolina	417
Arkansas	5	North Dakota	1
Arizona	159	Nebraska	13
California	900	New Hampshire	342
Colorado	176	New Jersey	3,306
Connecticut	11,187	New Mexico	19
Delaware	40	Nevada	38
District of Columbia	127	New York	4,480
Florida	1,010	Ohio	186
Georgia	315	Oklahoma	18
Hawaii	37	Oregon	61
Iowa	14	Pennsylvania	949
Idaho	15	Puerto Rico	70
Illinois	418	Rhode Island	390
Indiana	73	South Carolina	187
Kansas	22	South Dakota	2
Kentucky	26	Tennessee	82
Louisiana	21	Texas	298
Massachusetts	3,410	U.S. Virgin Islands	1
Maryland	527	Utah	32
Maine	180	Virginia	627
Michigan	95	Vermont	137
Minnesota	66	Washington	106
Missouri	45	Wisconsin	50
Mississippi	11	West Virginia	10
		Wyoming	8

UNDERGRADUATE ALUMNI by COUNTRY

Country	Headcount	Country	Headcount
Argentina	1	Italy	9
Australia	11	Jamaica	1
Barbados	1	Japan	7
Belgium	1	Kenya	2
Bermuda	4	Korea	6
Brazil	4	Malawi	1
Bulgaria	1	Malaysia	1
Canada	44	Mexico	5
Chile	2	Netherlands	5
China, People's Republic of	4	New Zealand	3
Colombia	3	Norway	1
Croatia	1	Pakistan	1
Cyprus	1	Panama	7
Czech Republic	1	Peru	1
Ecuador	2	Philippines	2
Egypt	2	Portugal	1
El Salvador	1	Scotland	1
England	23	Singapore	4
France	4	Spain	3
Germany	5	Sweden	3
Greece	1	Switzerland	10
Hong Kong	2	Trinidad and Tobago	1
Hungary	2	Turkey	1
India	4	United Kingdom	17
Ireland	7	Venezuela	1

UNIVERSITY ENDOWMENT MARKET VALUE

Year	Permanent Endowment	Permanent Endowment & Funds Functioning as Endowment
2000	\$83,221,000	\$105,911,000
2001	\$94,601,000	\$121,426,000
2002	\$89,376,000	\$122,935,000
2003	\$87,835,000	\$122,881,000
2004	\$99,721,000	\$141,851,000
2005	\$105,738,677	\$178,388,000
2006	\$112,813,000	\$209,283,000
2007	\$132,285,000	\$256,536,000
2008	\$129,806,000	\$249,006,000
2009	\$99,659,000	\$188,684,000
2010	\$94,964,000	\$204,142,000
2011	\$98,704,000	\$237,186,000
2012	\$109,055,000	\$229,134,000

DEVELOPMENT

Year	Unrestricted Cash	Total Cash
2000	\$2,348,214	\$20,474,174
2001	\$2,616,031	\$25,397,633
2002	\$2,500,582	\$14,793,844
2003	\$2,532,833	\$14,446,277
2004	\$2,616,261	\$12,537,009
2005	\$2,745,855	\$14,123,172
2006	\$2,953,061	\$11,182,955
2007	\$2,853,732	\$15,492,905
2008	\$3,152,185	\$8,831,197
2009	\$2,864,487	\$8,987,192
2010	\$2,949,011	\$10,384,166
2011	\$2,737,439	\$16,268,470
2012	\$2,664,325	\$13,847,027

UNIVERSITY BUILDINGS

Building	Purpose	Date	Sq. Ft.
Southwell Hall	Kathryn P. Koslow Family Counseling Center	1840	2,157
McAuliffe Hall	Purchasing and Receiving, School of Engineering, Finance, Administrative Offices	1896	39,740
St. Robert's Hall	Residence	pre-1920	1,891
Bellarmine Hall	President's Office, Advancement, Marketing/Communications Bellarmine Museum of Art	1921	36,375
		2010	2,700
Maintenance Complex	Maintenance	1922	13,381
Pepsico Theater	Theater	1922	4,849
Dolan House	Offices, Classrooms	1930	8,396
Berchmans Hall	Preparatory School	1947	52,252
Xavier Hall*	Media Center, Classrooms, Preparatory School	1947	57,889
Loyola Hall	Ignatian Residential College, Public Safety, Art Studios, Classrooms	1955	64,068
Gonzaga Hall	Residence Hall, Auditorium, Offices	1957	52,927
Canisius Hall	Classrooms, Academic Administrative	1957	51,201
Alumni Hall	Athletic Offices, Facilities, Gymnasium	1959	45,938
Dolan Hall	Residence Hall, Health Center, Counseling Services	1960 (East)	56,364
		2011 (West)	20,076
Campion Hall	Residence Hall	1964	50,452
Regis Hall	Residence Hall	1965	61,535
Dolan Commons	Computing and Network Services, Design & Digital Print Services, Human Resources	1966	21,710
Barone Campus Center	Auxiliary Services (dining rooms, bookstore, mail room), Student Organizations, Administrative and Student Life Offices, Meeting, Social and Event Space	1966	103,073

* University space in Xavier Hall on Ground Floor

UNIVERSITY BUILDINGS (continued)

Building	Purpose	Date	Sq. Ft.
Jogues Hall	Residence Hall, Music Classroom and Offices	1968	68,255
DiMenna - Nyselius Library	Library, Center for Academic Excellence	1968	113,184
Central Utility Facility	Energy Services	1970	8,690
Kostka Hall	Residence Hall	1970	44,716
Bannow Science Center	Classrooms, Laboratories, Faculty Offices	1971	147,168
Claver Hall	Residence Hall	1972	40,510
School of Nursing	Classrooms, Laboratories, Administrative and Faculty Offices	1977	16,471
42 Bellarmine Road	Residence Hall	1978*	47,260
(Charles F.) Dolan School of Business	Classrooms, Administrative and Faculty Offices, Meeting and Event Space	1979	70,739
Recreational Complex	Recreational Facilities, Pool	1979	61,791
Donnarumma Hall	Faculty Offices, Academic Administrative, Classrooms	1981	33,649
Townhouses (#1-7)	Student Residences	1982	62,772
Townhouses (#8-10)	Student Residences	1984	29,721
Townhouses (#11-15)	Student Residences	1987	47,339
Quick Center for The Arts	Theaters, Art Gallery	1989	36,604
Egan Chapel of St. Ignatius Loyola and Arrupe Campus Ministry Center	Chapel, Campus Ministry, Meeting Room	1990	17,504
The Levee	Pub, Snack Bar	1995	3,500
Walsh Athletic Center	Division 1 Athletic Training Center, Sports Medicine Atheletic Offices and Academic Center, Practice Gym	1995 1997	14,400 37,537

* Converted from Jesuit residence to student residence hall in 2010

UNIVERSITY BUILDINGS
(continued)

Building	Purpose	Date	Sq. Ft.
Alumni House	Administrative Offices, Meeting and Event Space	2000	9,483
47 Mahan Road	Student Residence	2000	78,000
Fr. Brissette Athletic Center	Preparatory School Gymnasium	2004	10,944
Pedro Arrupe Hall	Preparatory School	2005	28,813
Aloysius P. Kelley, S.J. Center	Administrative and Student Service Offices, Function Space	2006	23,707
Early Learning Center	Day Care	2008	2,957
St. Ignatius Hall	Fairfield Jesuit Community Center	2010	20,000
70 McCormick Road	Student Residence	2011	33,700
51 McInnes Road	Student Residence	2011	64,663
North Benson Road, House #1036	Student Residence	2011	2,490
North Benson Road, House #1052	Student Residence	2011	2,600
North Benson Road, House #1082	Staff Residence	2011	2,220
TOTAL SQUARE FOOTAGE			1,924,861

HISTORY

- 1942** Fairfield College of St. Robert Bellarmine, Inc. purchased two adjoining estates in Fairfield
Fairfield College-Preparatory School opened classes in a four-year program
- 1945** Fairfield University was chartered on May 29 by the State of Connecticut to grant degrees
- 1947** First class of 303 male students was admitted to the College of Arts and Sciences
- 1949** College of Arts and Sciences was accredited by the State of Connecticut
First summer session of undergraduate courses was held
- 1950** First graduate classes in education were held on a coeducational basis
Education Program for teacher certification was accredited by the State of Connecticut
- 1951** First graduation class
- 1953** Fairfield University was admitted to fully accredited membership in the New England Association of Schools and Colleges (NEASC)
- 1963** Graduate Department of Education became the Graduate School of Education
- 1966** Graduate School of Corporate and Political Communication opened
- 1970** Women were admitted to all undergraduate programs
Undergraduate School of Nursing admitted its first class
- 1972** Center for Lifetime Learning offered its first courses
Graduated first class of women
- 1975** Connecticut Center for Continuing Education became part of the University
- 1978** School of Business was established
- 1979** School of Continuing Education was established
- 1981** School of Business offered its first Master of Science degree program in Financial Management
- 1982** The Graduate School of Education and Allied Professions merged with The School of Continuing Education to form The School of Graduate and Continuing Education
- 1987** The School of Graduate and Continuing Education was separated into two schools: The School of Continuing Education and The Graduate School of Education and Allied Professions
- 1989** Acquired the Sisters of Notre Dame de Namur property
- 1990** The Graduate School of Communication closed
- 1994** Acquired Bridgeport Engineering Institute
Masters of Science in Nursing and Masters in Business Administration Program offered
- 1995** Accepted into Phi Beta Kappa
- 1997** Granted accreditation into the Association to Advance Collegiate Schools of Business (AACSB International)
Master of Arts offered in American Studies
- 1998** Master of Science offered in Management of Technology and in Software Engineering
- 1999** School of Engineering becomes a separate undergraduate school
- 2000** Master of Science offered in Mathematics
School of Business named to honor Cablevision founder Charles F. Dolan
- 2002** School of Continuing Education was renamed to University College
- 2004** Fairfield University's eighth President was installed
- 2008** MFA in Creative Writing launched
- 2009** Master's in Communication offered
- 2010** Doctor of Nursing Practice offered
Bellarmine Museum opened
- 2012** University College closed and part-time students matriculated into other colleges